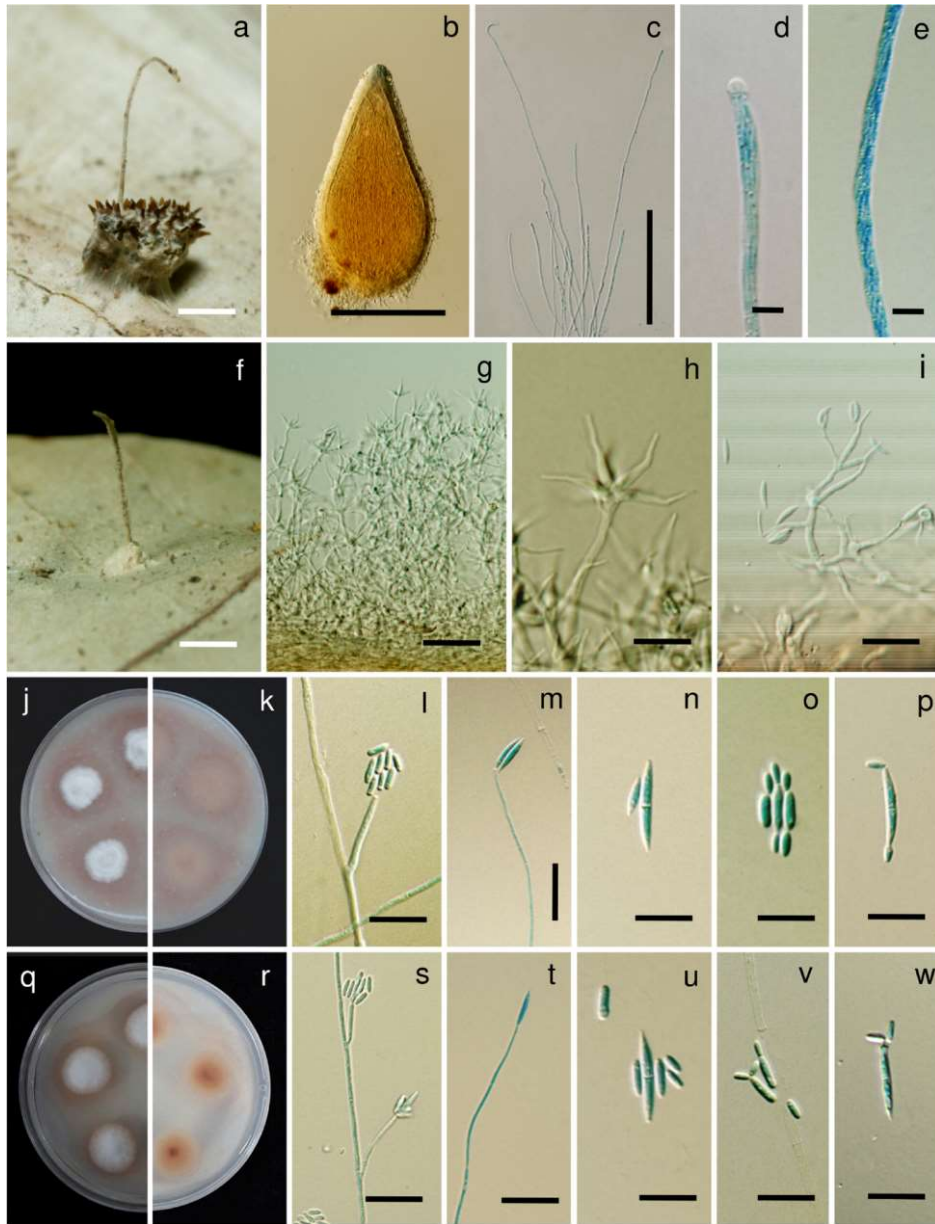
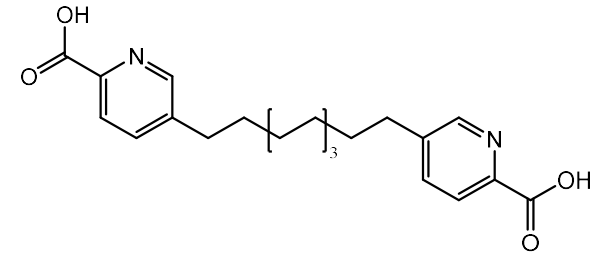


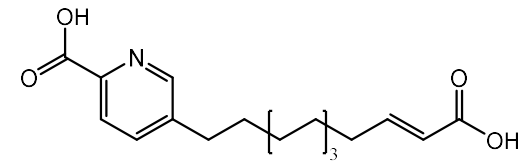
Morphology of *Bhushaniella rubra* sp. nov



a Fungus arising from spider eggs in a sac (BBH 31245). **b** Perithecium **c** Asci **d** Ascus tip **e** Filiform whole ascospores in ascus. **f** Fungus on a spider egg sac (BBH 31241). **g** Conidiogenous cells forming verticillated phialides. **h–i** Phialides with conidia. **j–k** Culture characters on OA with reddish pigment diffusing in agar medium (**j** obverse, **k** reverse). **l–m** Phialide apex with conidial head on OA. **n** Conidia on OA. **o–p** Microcycle conidiation on OA. **q–r** Culture characters on PDA with reddish pigment diffusing in agar medium (**q** obverse, **r** reverse). **s–t** Apices of phialides apex with conidial heads on PDA. **u** Conidia on PDA. **v–w** Microcycle conidiation on PDA Scale bars: a, f=2 mm, b=300 μ m, c=100 μ m, g, m, s, t=20 μ m, d, e=5 μ m, h, i, l, n, o, p, u, v, w=10 μ m



penicolinate F



penicolinate G

Novel bioactive secondary metabolites
from *Bhushaniella rubra* sp. nov